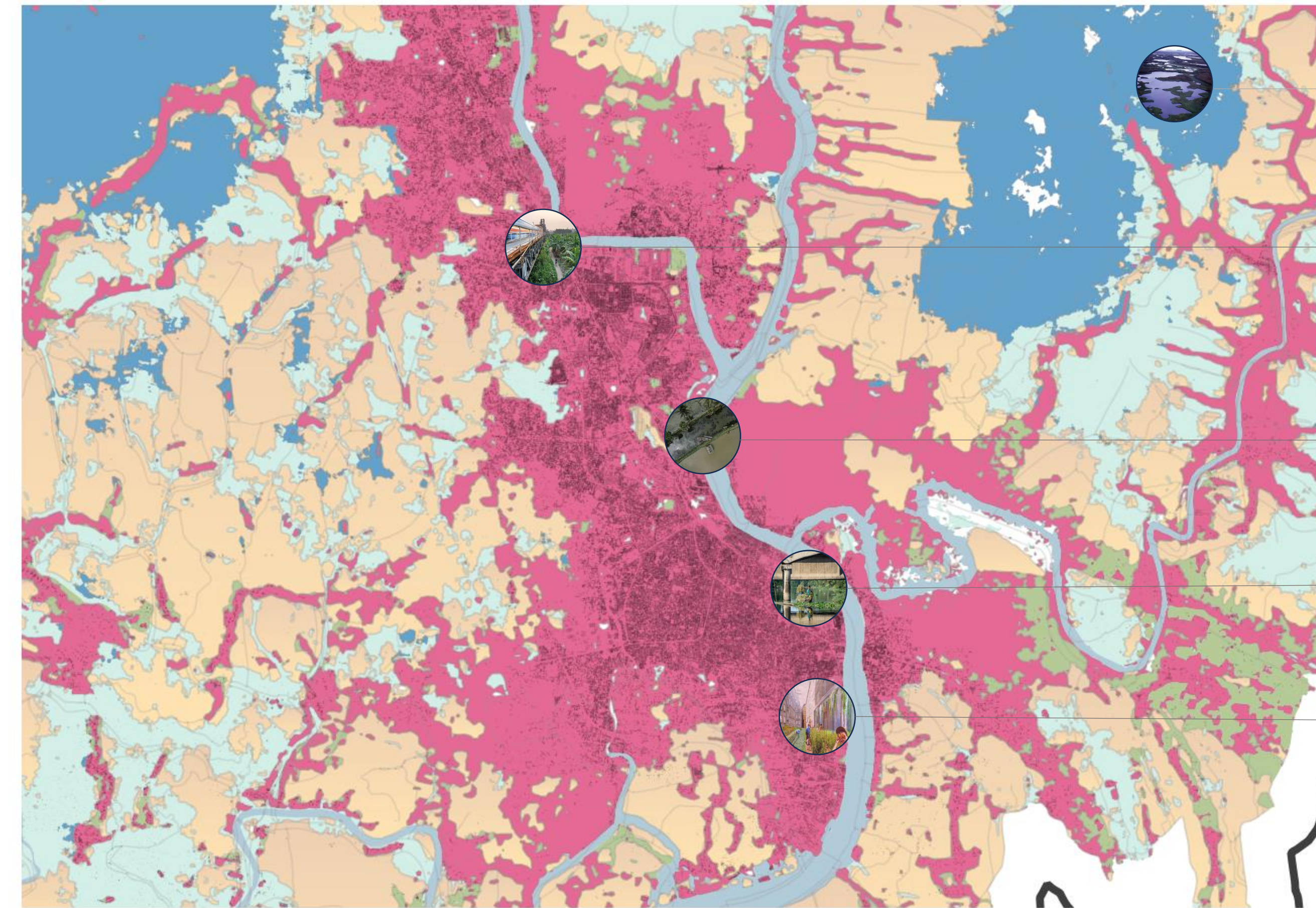


KHULNA CITY AND ITS PERI-URBAN AREAS



Wetland sanctuaries



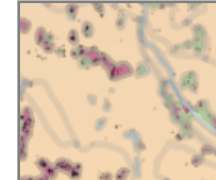
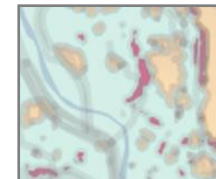


Urban agriculture

Room for the Rupsha river

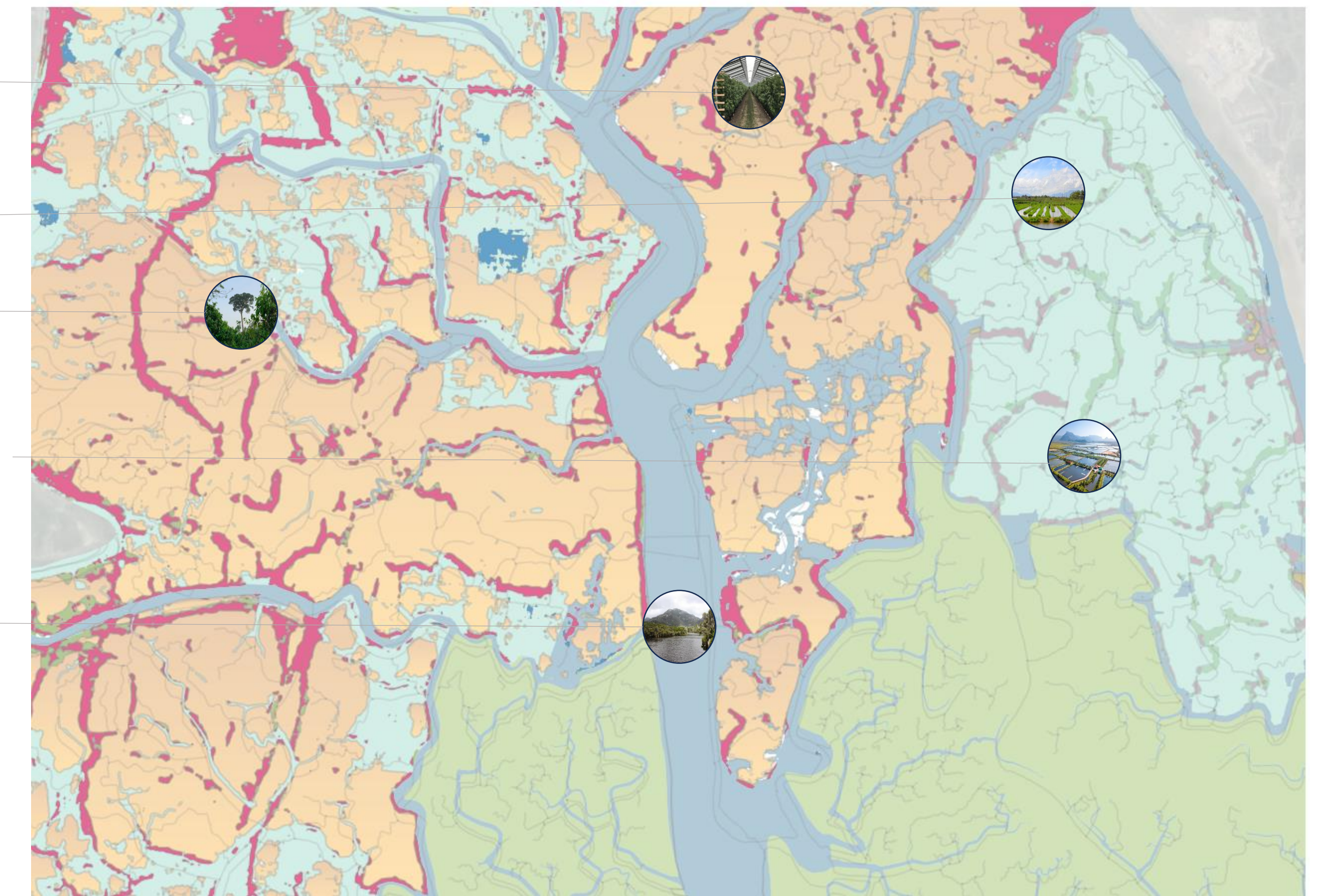
Natural Drainage Systems

Rooftop gardens

RURAL AREAS

-  - Urban areas
-  -Wetlands (Beels)
-  -Rural areas (rice cultivation)
-  -Rural areas (aquaculture)
-  -Sundarbans
-  -Rivers

- Agrivoltaics
- Tidal River Management
- Agroforestry
- Mixed shrimp farming and mangrove cultivation
- Tidal River Management



COASTAL AREA OF KHULNA DISTRICT



Oyster reefs

Community based mangrove management

Seagrass meadows

Naturally accreted islands

Offshore solar power generation